

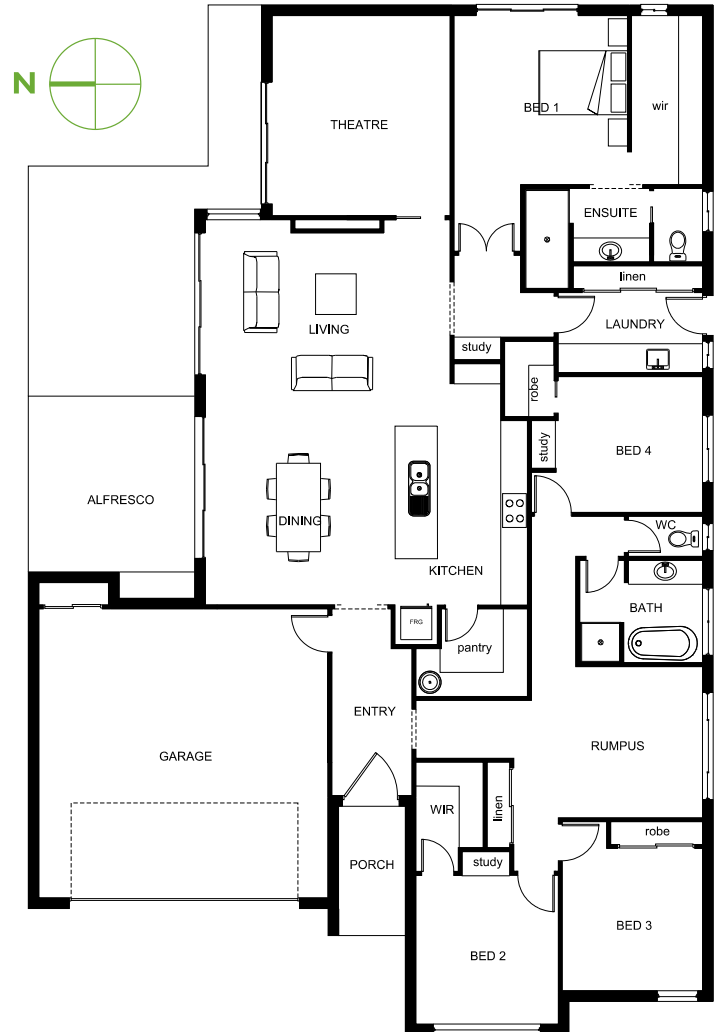
LOTUS 297



 2
  4
  2
  32

With a Greenmark Home we can fully customise our designs to suit your needs and your block. Our team of professionals will guide you at every step of the building process, giving you peace of mind. We will show you how to design a comfortable home with low impact on the environment - economical to run, healthier to live in.

HOUSE SIZE	15.4m x 23.2m
LIVING	5.5m x 4.7m
DINING	4.1m x 4.3m
THEATRE	4.5m x 4.0m
RUMPUS	3.4m x 3.9m
MASTER BED	3.9m x 3.8m
BED 2	3.3m x 3.2m
BED 3	3.2m x 3.1m
BED 4	3.2m x 3.0m
GARAGE	6.5m x 6.5m
TOTAL AREA	297m ² /32sq



Contact us on **6882 5453**
www.greenmarkhomes.com.au

This plan is copyright of Greenmark Homes and must not be reproduced in any way without consent.

The facade shown is an artists impression only. Images may include upgrade items and may depict fixtures, finishes and features not supplied by Greenmark Homes.